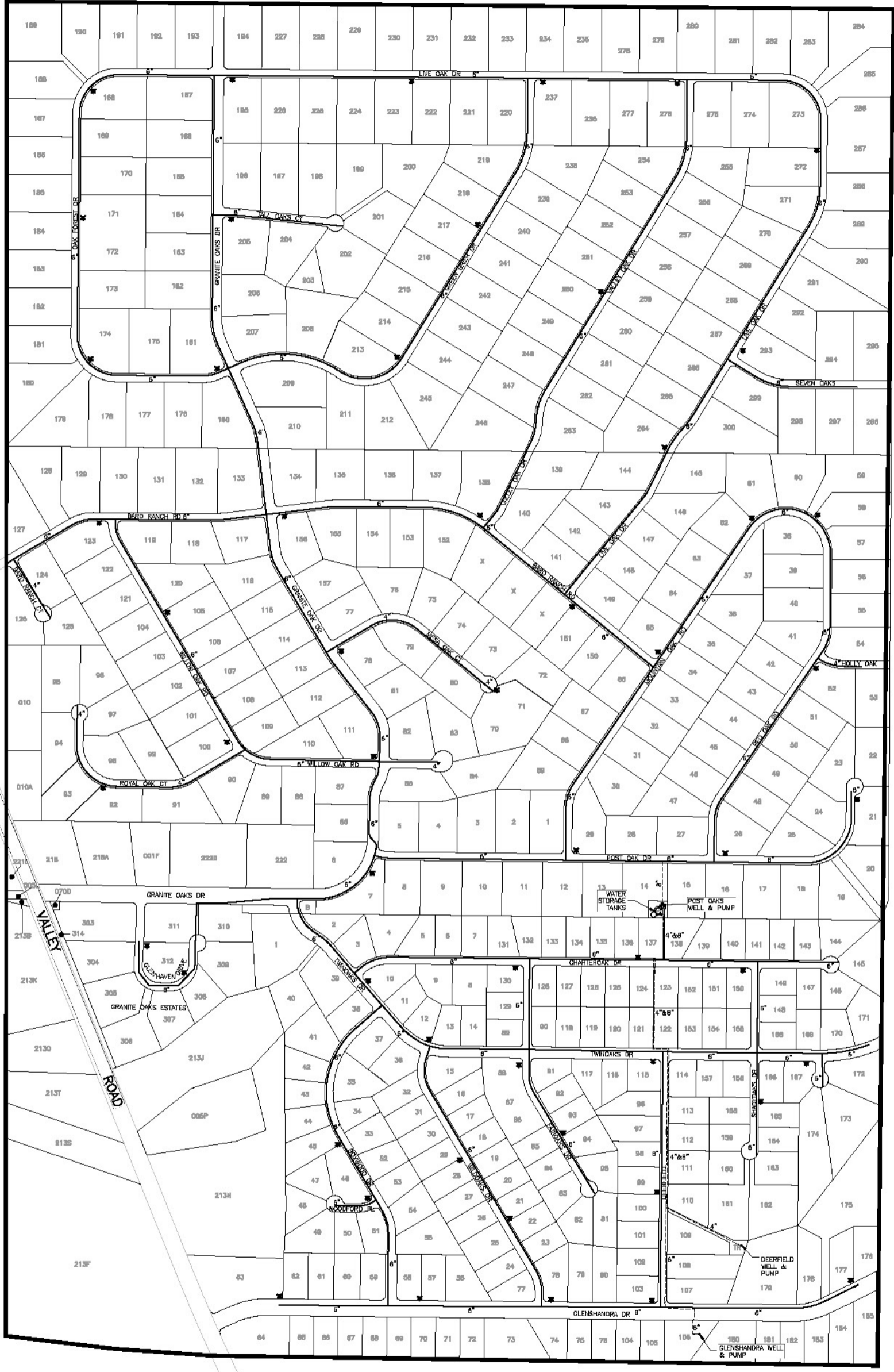
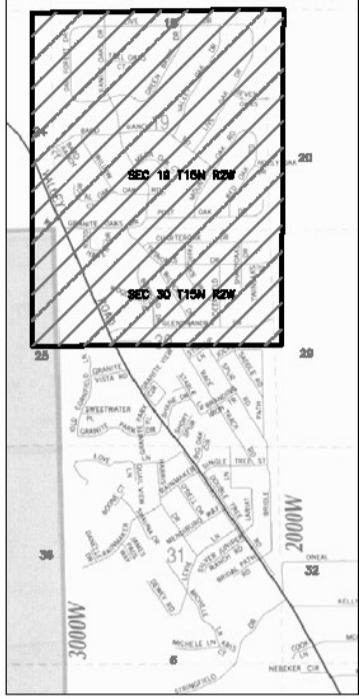


FRANCHISE AREA/VICINITY MAP



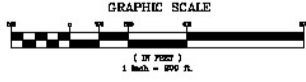
LEGEND

- SERVICE AREA BOUNDARY
- WATER DISTRIBUTION MAIN
- WATER TRANSMISSION MAIN
- EXISTING FIRE HYDRANT LOCATION
- SIZE OF WATER PIPE
- FRANCHISE AREA

PRINCIPAL FEATURE NOTES:

1. APPROXIMATELY 57,500 LINEAR FEET OF DISTRIBUTION WATER MAIN OR 10.8 MILES.
2. APPROXIMATELY 2800 LINEAR FEET OF 4" DISTRIBUTION WATER MAIN OR 0.5 MILES.
3. APPROXIMATELY 2420 LINEAR FEET OF 4" TRANSMISSION WATER MAIN OR 0.45 MILES.
4. APPROXIMATELY 855 LINEAR FEET OF 6" TRANSMISSION WATER MAIN OR 0.16 MILES.
5. APPROXIMATELY 1910 LINEAR FEET OF 8" TRANSMISSION WATER MAIN OR 0.36 MILES.
6. DEERFIELD WELL: CAPACITY = 392 GPM AT 319.5 FT. OF HEAD WITH 50 HP MOTOR (DEC. 2003) PRESENTLY 250 GPM WITH 25 HP MOTOR.
7. GLENSHANDRA WELL: CAPACITY = 405 GPM AT 307.6 FT. OF HEAD WITH 50 HP MOTOR.
8. POST OAK WELL: CAPACITY 83 GPM WITH 15 HP MOTOR.
9. DISTRIBUTION PUMPS: CAPACITY 910 GPM CAPACITY (WITH ALL 3 PUMPS RUNNING)
 1-CRUNDIFOS 25 HP MOTOR, 450 GPM
 2-CRUNDIFOS 15 HP MOTORS, 330 GPM EACH
10. STORAGE: 1-100,000 GALLON GRAVITY TANK, 1-82,200 GALLON GRAVITY TANK, AND 1-132 GALLON HYDRO-PNEUMATIC TANK.
11. FIRE HYDRANTS
 53-FIRE HYDRANTS ON 6" OR LARGER LINES
 2-FIRE HYDRANTS ON 4" LINES
 55 TOTAL FIRE HYDRANTS

NOTE:
 ALL WATER PIPE IS P.V.C EXCEPT FOR THE 4" D.I.P. TRANSMISSION MAIN FROM THE ROYAL OAKS WELL.



C
 Civil Engineering
 3500 N. Wiley Road #4
 P.O. Box 43 93501
 Phone: (936) 771-3378
 Fax: (936) 771-3377
 21200 180 Ave. Ste. B-11
 Phone: (936) 365-0970
 Fax: (936) 365-0970

GRANITE OAKS WATER USERS ASSOCIATION

DRAWN BY: RLB
 CHECKED BY: DJM
 REVISIONS:
 UPDATED LOT LINES 8-12-10
 UPDATED HYDRANT AS-BUILT LOCATIONS 8-13-10
 UPDATED TEXT PER CLIENT REQUEST 10-4-10

SERVICE AREA AND DISTRIBUTION SYSTEM MAP